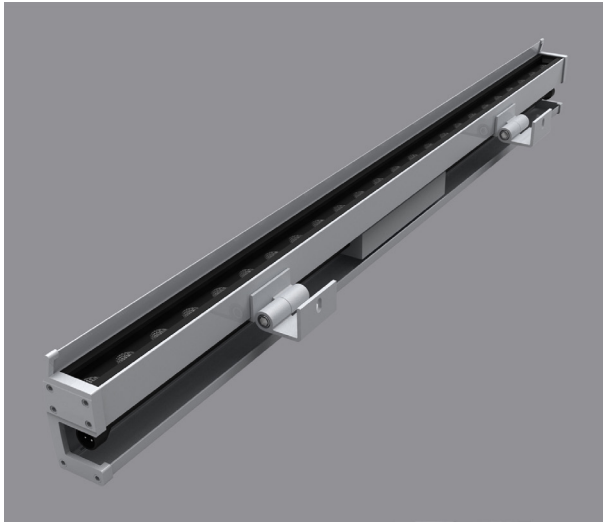




www.foliled.com
info@foliled.com
+44(0)131 452 2024

LINEAR LIGHT DATASHEET

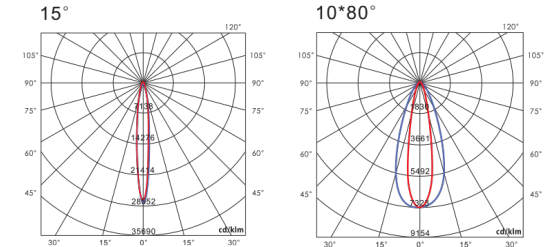
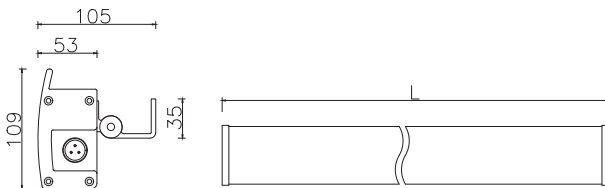
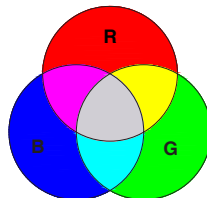
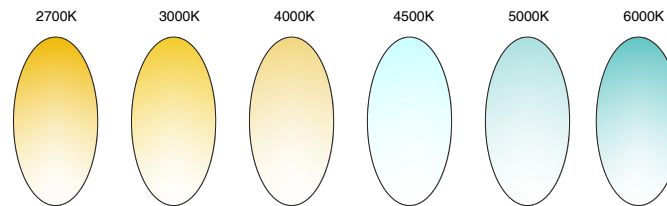
FOLI-GGL53109-LED



Linear LED Lighting with a simple and efficient design ideal for all interior projects such as hotel, villas, clubs, opera houses, museums, exhibition centres, stores, boutiques, homes, etc.

All linear products are eco -friendly with low energy consumption and excellent thermal management allowing energy savings and longer life.

Surface mounted fitting with adjustable bracket. The body is aluminium alloy with die-cast end caps completed with silicone seal. The optical screen is clear glass – 4mm thick. The fitting is equipped with two nickel-finished brass glands and neoprene cable for daisy-chain connection.



24 / 30 / 36pcs high power Cree LEDs

36W / 48W / 60W

AC110-230V

DMX512 and Dali Driver

5°, 10°, 25°, 45°, 60°, 90° & 10°- 60°, 20°- 40°

4738lm @ 60W / 4000K

Silver Aluminum, Grey, Black, Customized

Optional Dimming

5 Years Warranty

80% after 50,000 Hours

-30°C to 50°C

IP Rating